

16th STREET EAST

6th AVE. EAST

EXISTING
PARISH
CENTRE

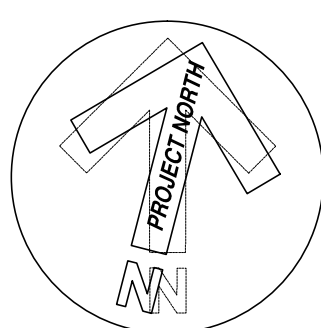
EXISTING
ST. MARY'S
CHURCH

EXISTING
RECTORY

EXISTING
GARAGE

EXISTING PARKING = 53 SPACES.

15th STREET EAST



G.M. DIEMERT ARCHITECT INC.

957 FOURTH AVENUE EAST
OWEN SOUND, ONTARIO
SUITE #201
N4K 2N9 (519)376-1975

Existing Site Plan

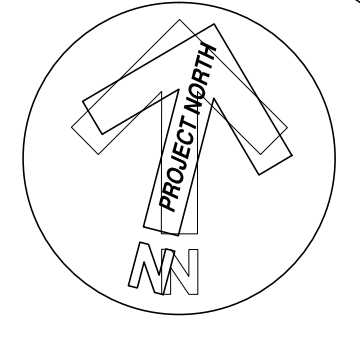
June 06, 2018

St. Mary of the Assumption

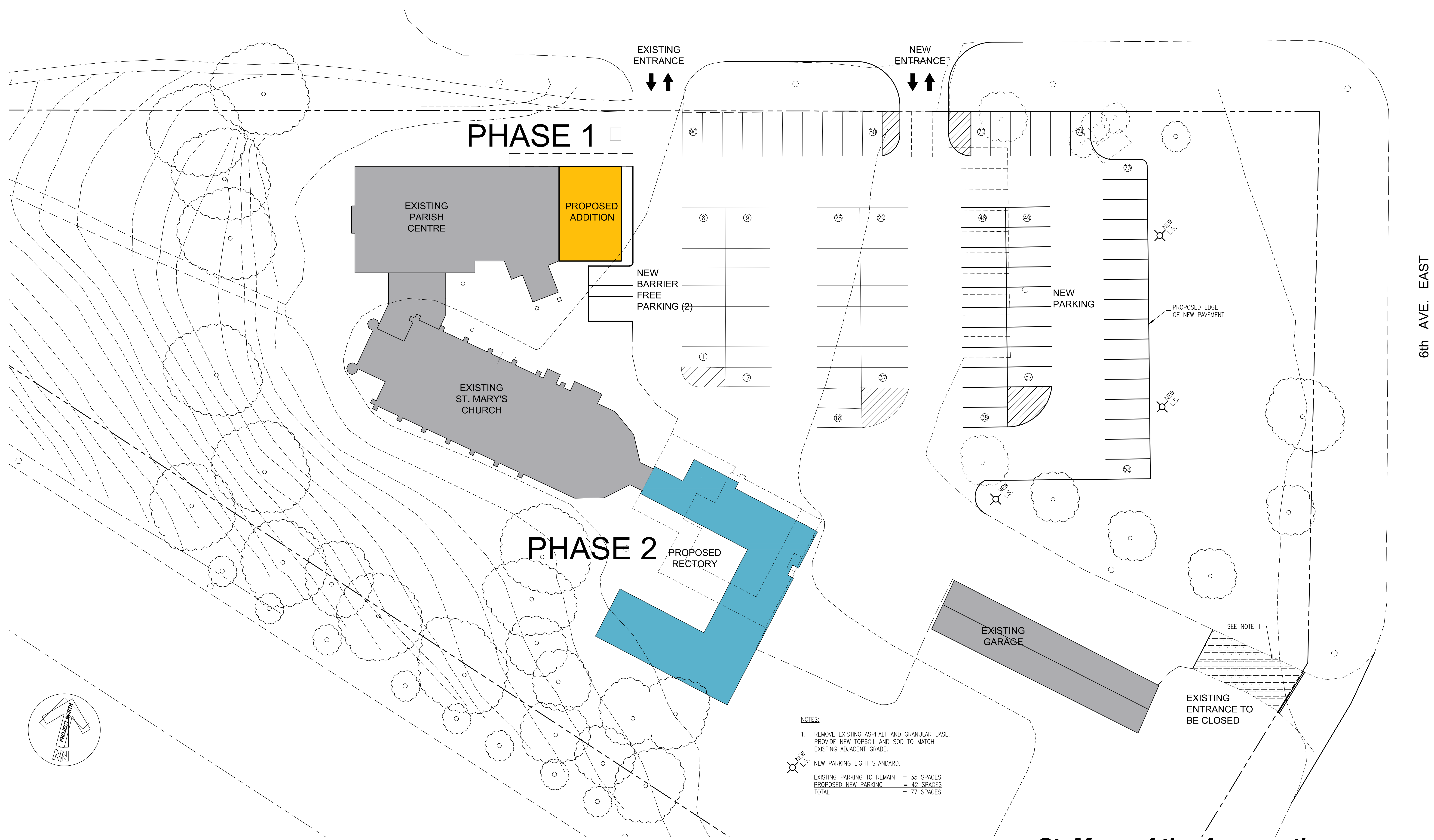
ROMAN CATHOLIC CHURCH

551 15th Street East
Owen Sound, Ontario

C:\Users\kbecker\GND\Projects\4668\20180607-PRSTN-REVISED.dwg Jun 06, 2018 - 3:18pm



G.M. DIEMERT ARCHITECT INC.
957 FOURTH AVENUE EAST
OWEN SOUND, ONTARIO
SUITE #201
N4K 2N9 (519)376-1975

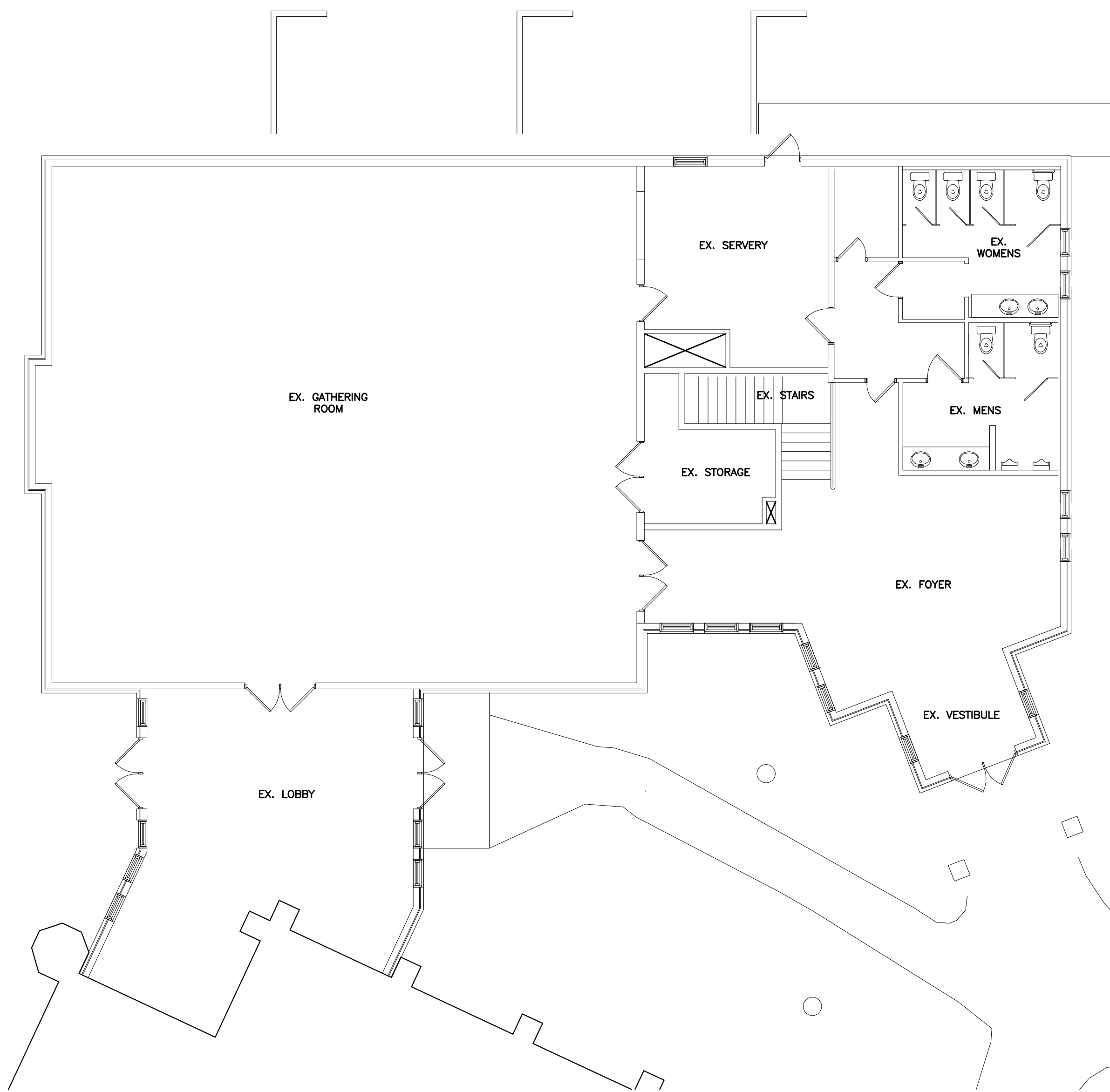


NOTES:
1. REMOVE EXISTING ASPHALT AND GRANULAR BASE.
PROVIDE NEW TOPSOIL AND SOD TO MATCH
EXISTING ADJACENT GRADE.
NEW PARKING LIGHT STANDARD.
EXISTING PARKING TO REMAIN = 35 SPACES
PROPOSED NEW PARKING = 42 SPACES
TOTAL = 77 SPACES

Proposed Site Plan
June 06, 2018

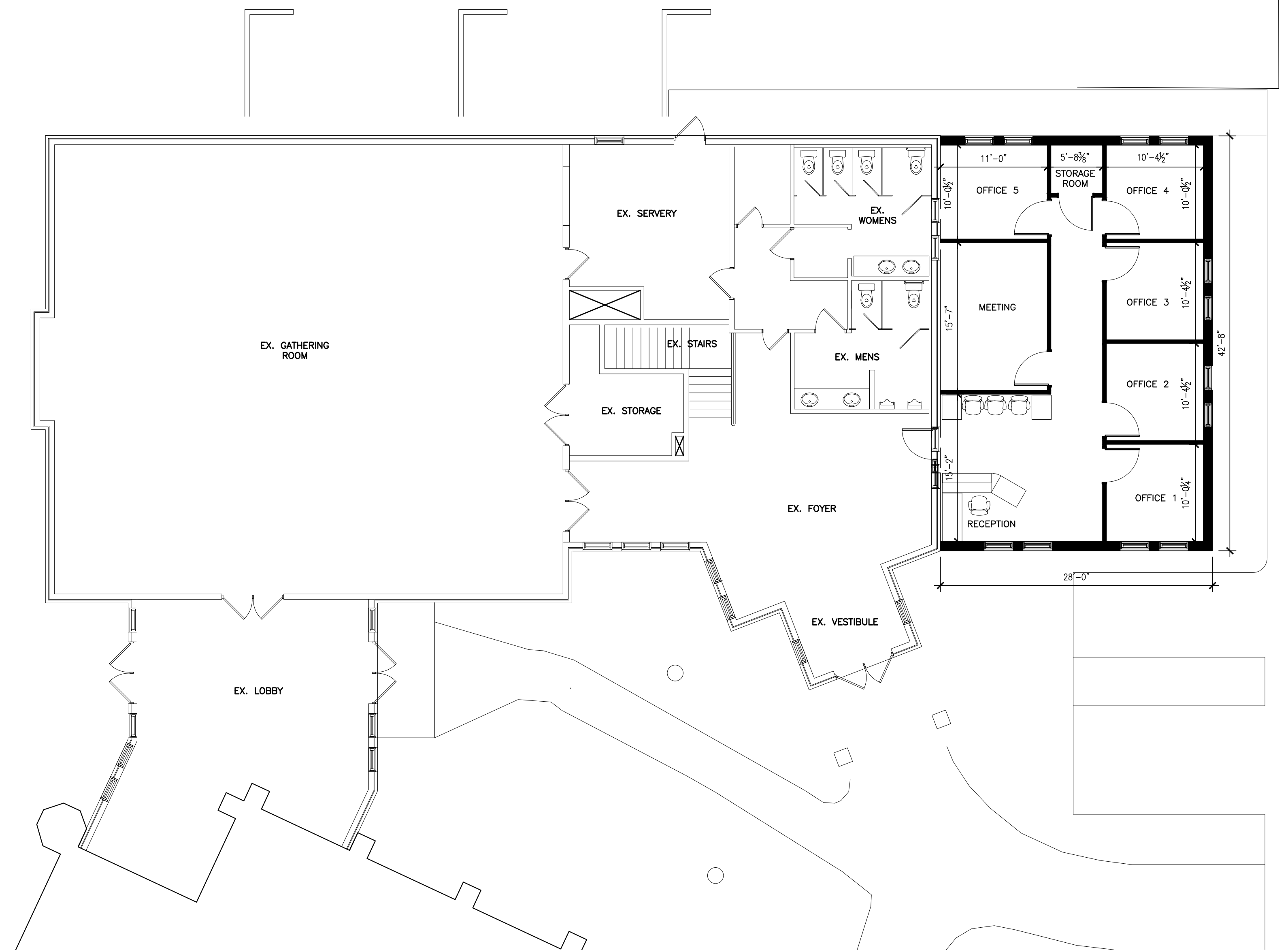
St. Mary of the Assumption
ROMAN CATHOLIC CHURCH
551 15th Street East
Owen Sound, Ontario

6th AVE. EAST



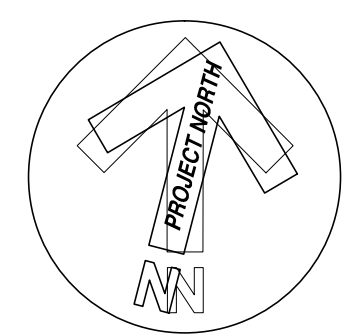
Existing Parish Hall

1/8" = 1'-0"



Proposed Parish Hall Addition

1/8" = 1'-0"



G.M. DIEMERT ARCHITECT INC.

957 FOURTH AVENUE EAST
OWEN SOUND, ONTARIO
SUITE #201
N4K 2N9 (519)376-1975

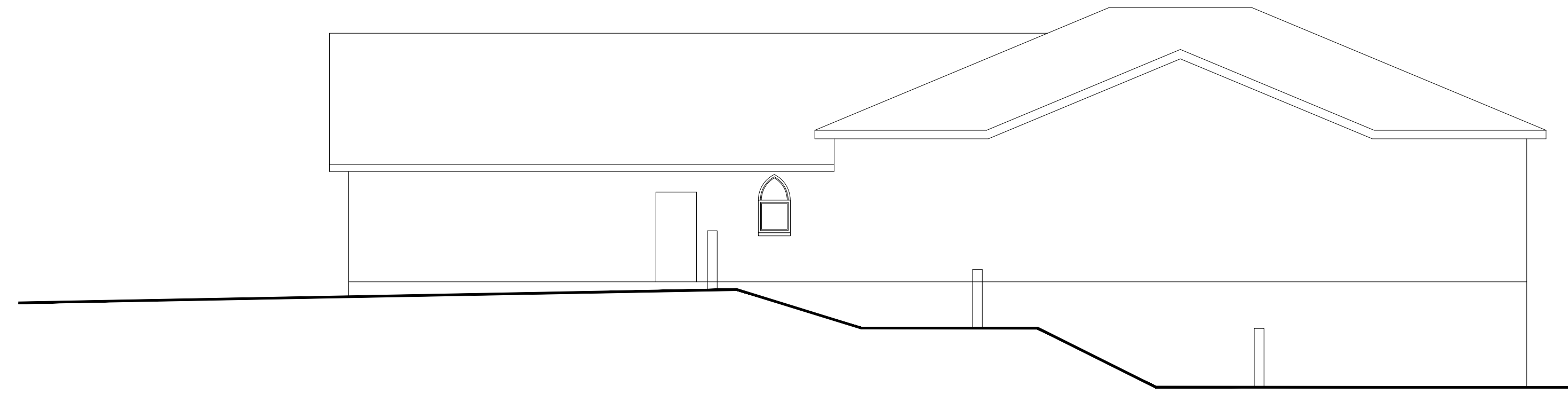
Parish Hall - Phase 1

June 06, 2018

St. Mary of the Assumption

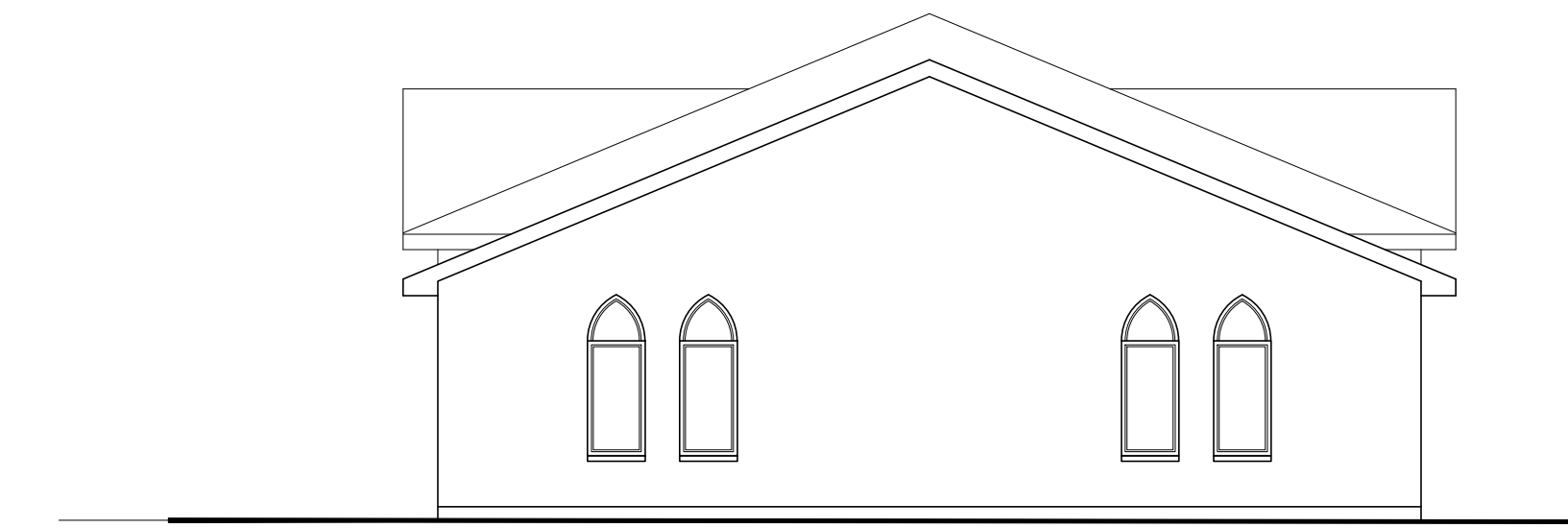
ROMAN CATHOLIC CHURCH

551 15th Street East
Owen Sound, Ontario



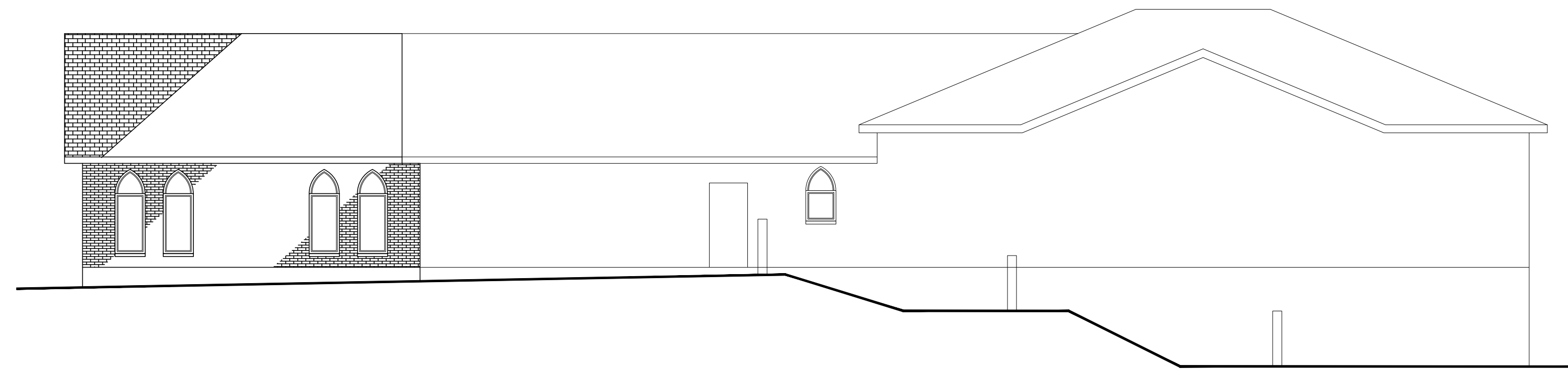
Existing Parish Hall - North Elevation

1/8" = 1'-0"



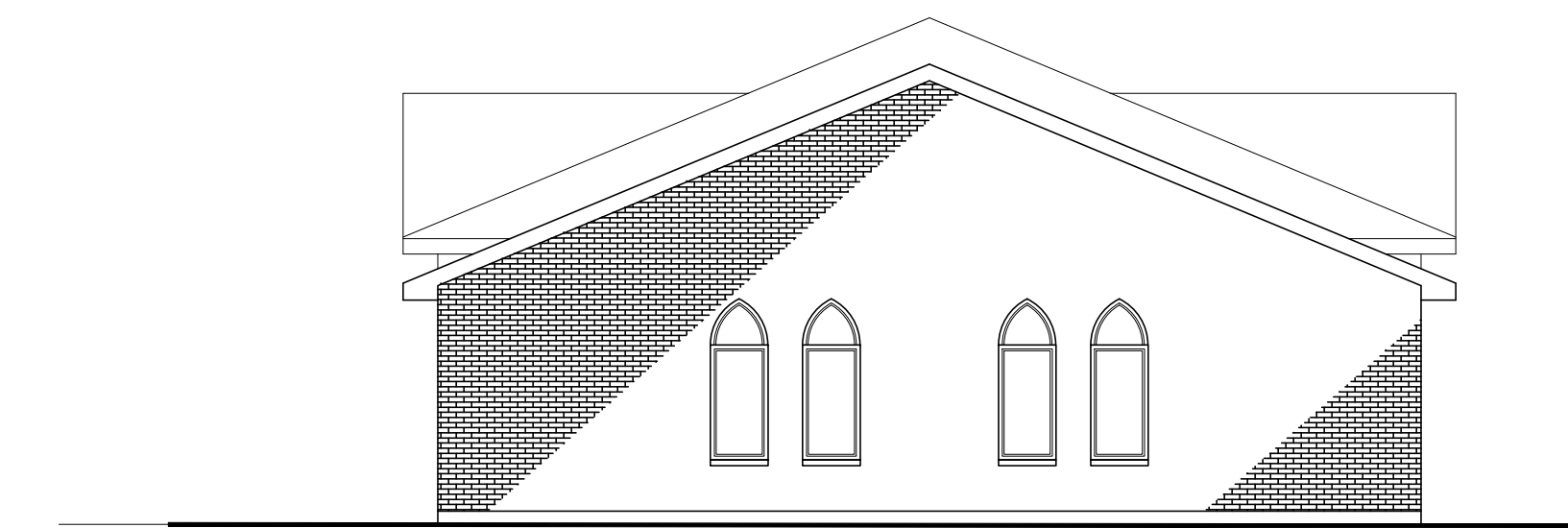
Existing Parish Hall - East Elevation

1/8" = 1'-0"



Proposed Addition - North Elevation

1/8" = 1'-0"



Proposed Addition - East Elevation

1/8" = 1'-0"

G.M. DIEMERT ARCHITECT INC.

957 FOURTH AVENUE EAST
OWEN SOUND, ONTARIO
SUITE #201
N4K 2N9 (519)376-1975

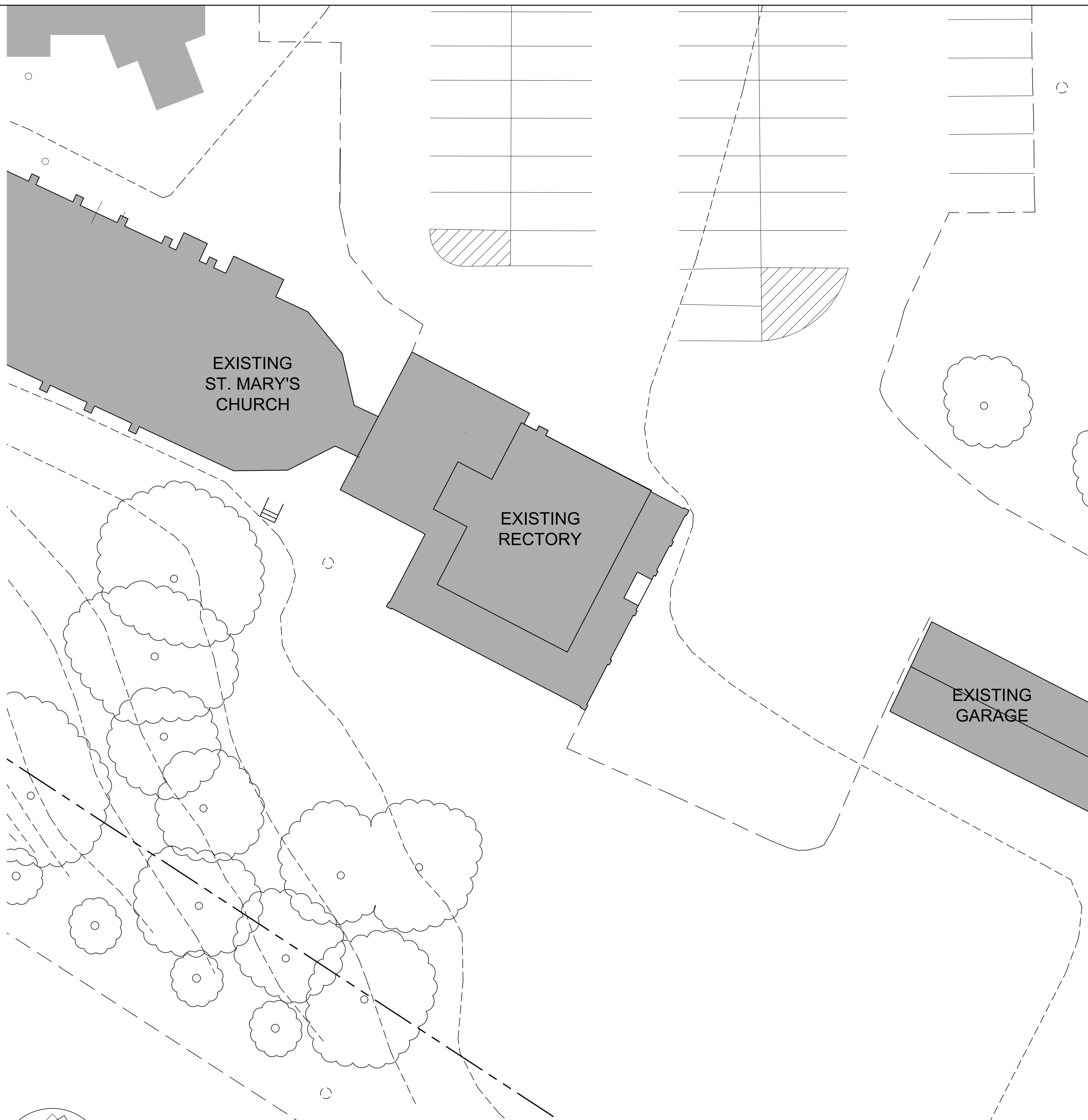
Parish Hall - Phase 1

June 06, 2018

St. Mary of the Assumption

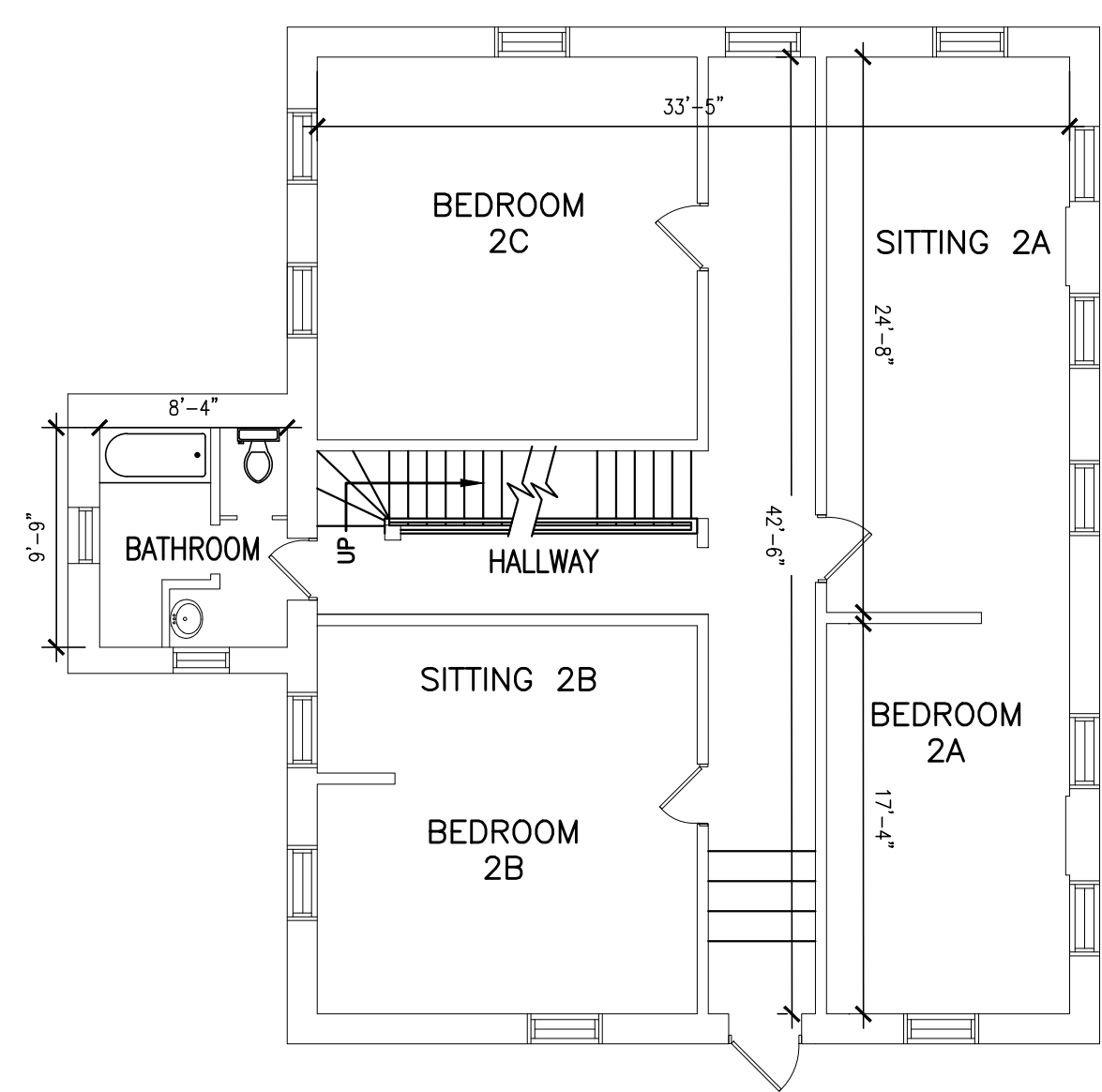
ROMAN CATHOLIC CHURCH

551 15th Street East
Owen Sound, Ontario



Partial Site Plan
 1/16" = 1'-0"

Existing Rectory
 June 06, 2018



Second Floor
 1/8" = 1'-0"

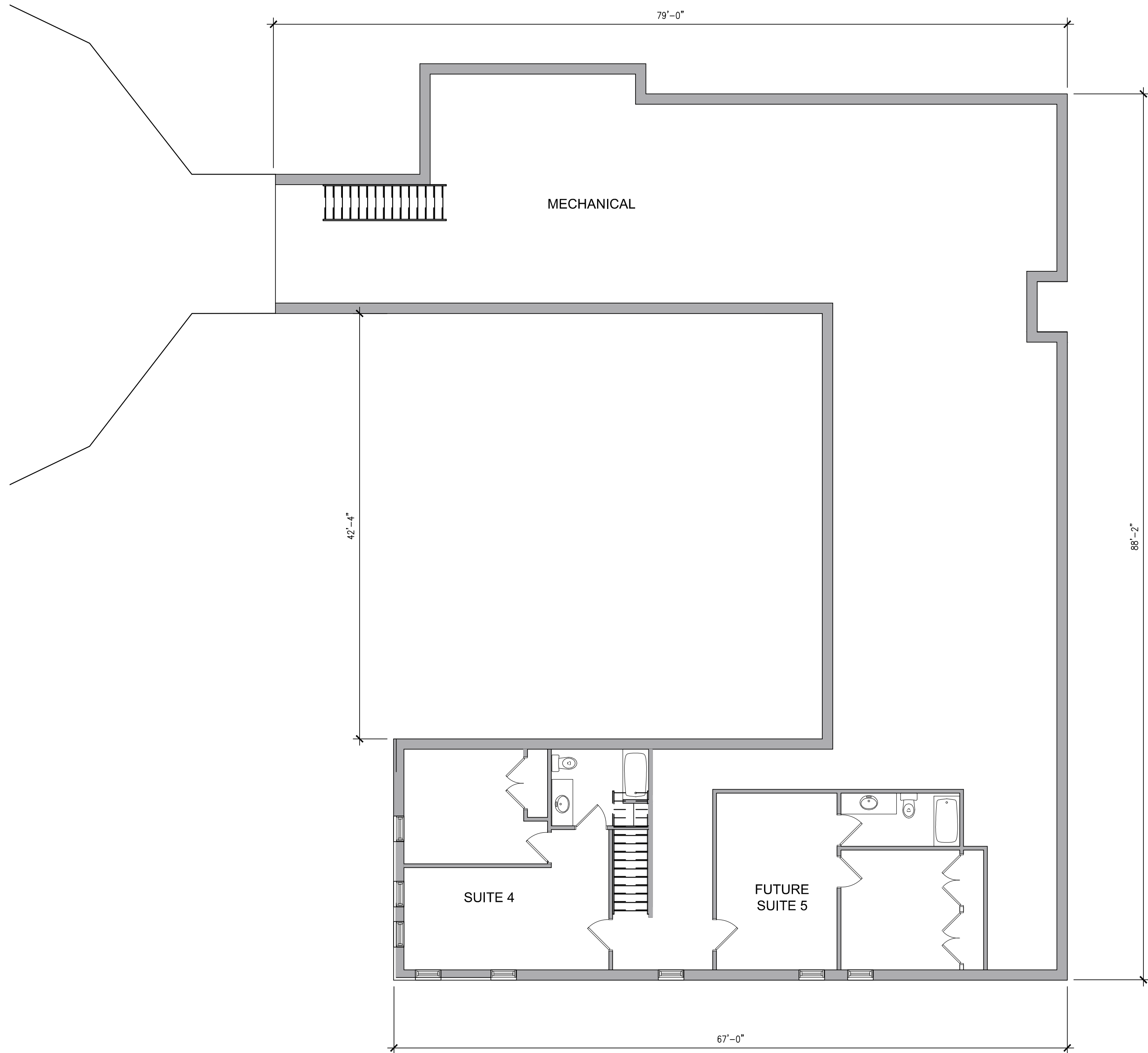


Main Floor
 1/8" = 1'-0"

St. Mary of the Assumption
ROMAN CATHOLIC CHURCH
 551 15th Street East
 Owen Sound, Ontario

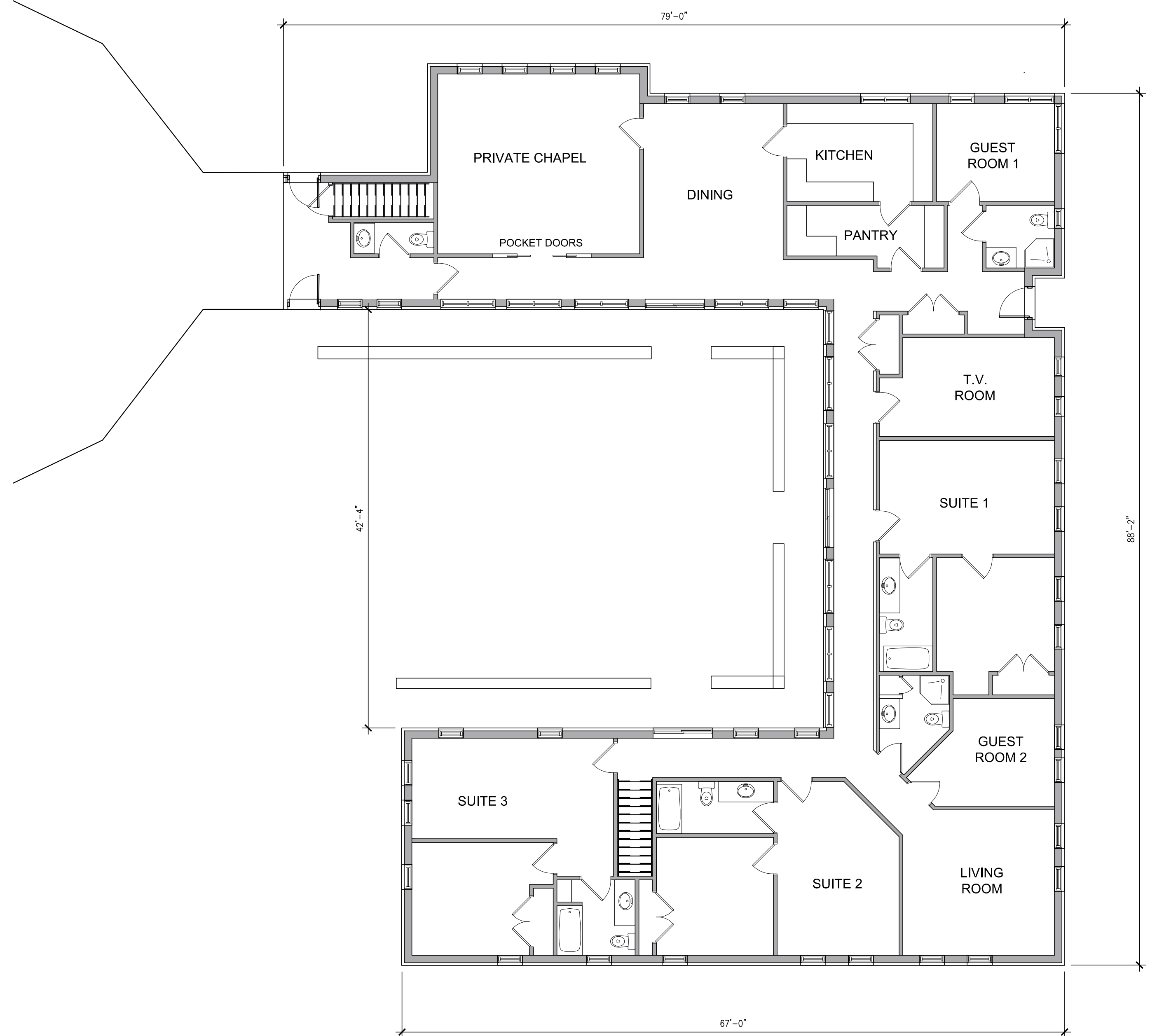
G.M. DIEMERT ARCHITECT INC.
 957 FOURTH AVENUE EAST
 OWEN SOUND, ONTARIO
 SUITE #201
 N4K 2N9 (519)376-1975

C:\Users\kvecker\GMA\Projects\OwenSound\Temp\Pub\4668_20180607-REVISED.dwg Jun 06, 2018 3:18pm



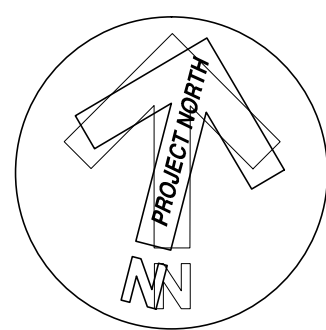
Basement Plan

1/8" = 1'-0"



Main Floor Plan

1/8" = 1'-0"



G.M. DIEMERT ARCHITECT INC.

957 FOURTH AVENUE EAST
OWEN SOUND, ONTARIO
SUITE #201
N4K 2N9 (519)376-1975

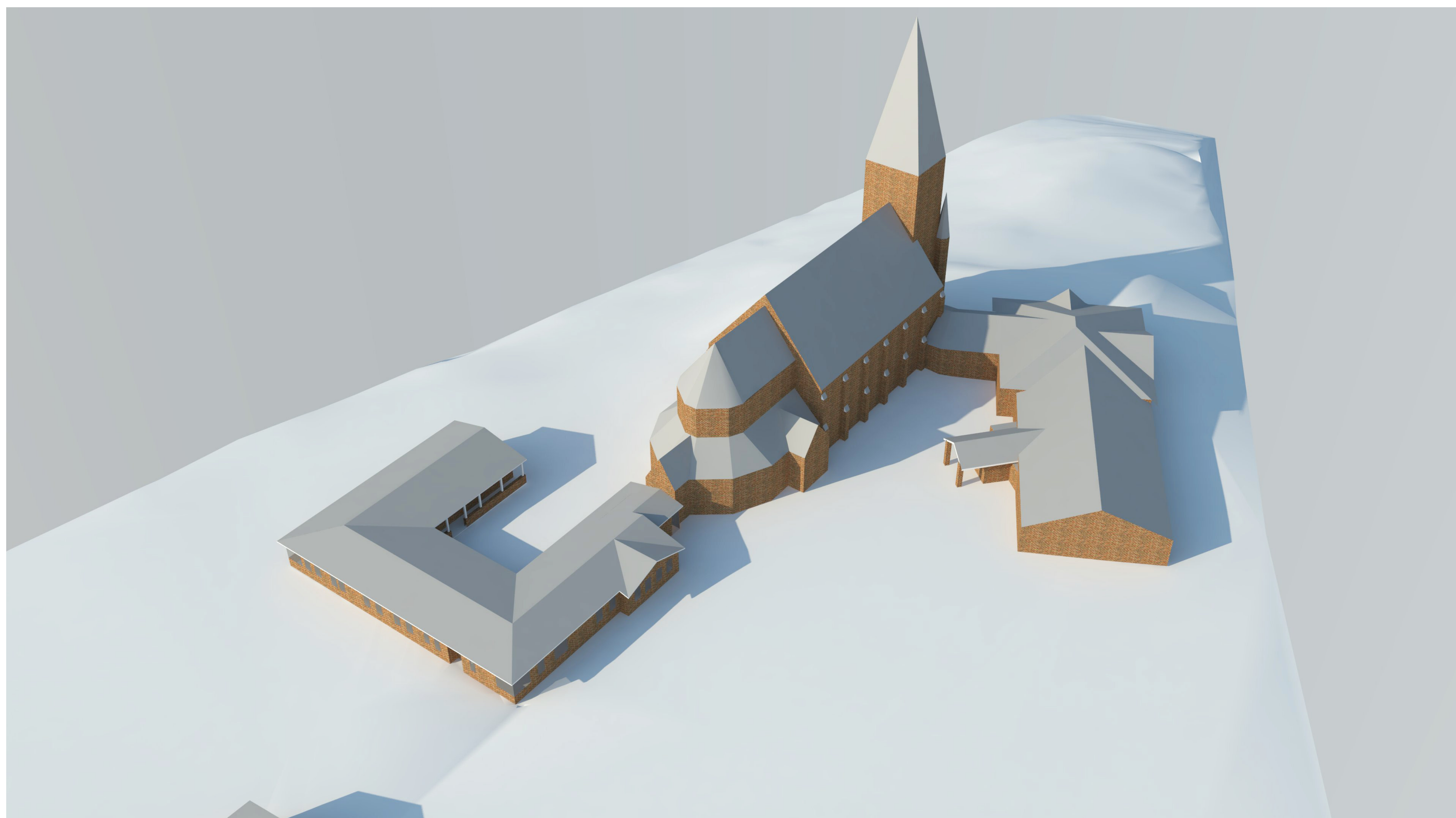
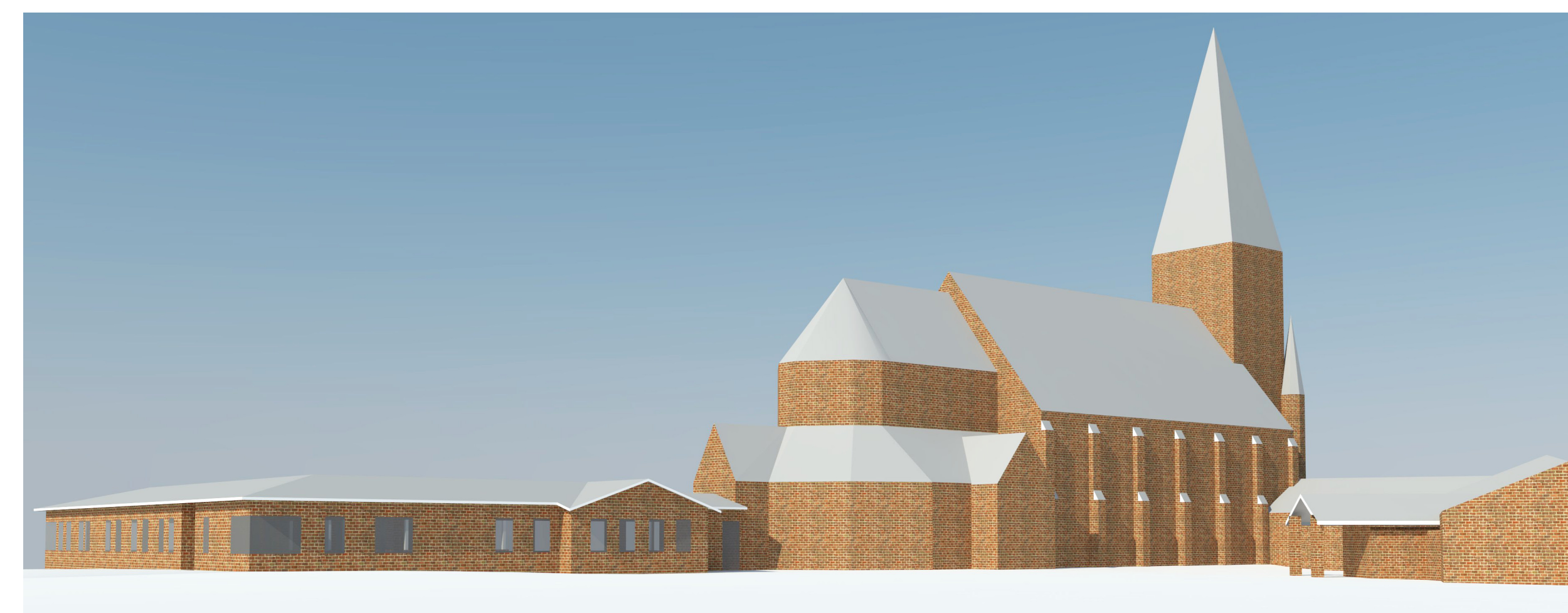
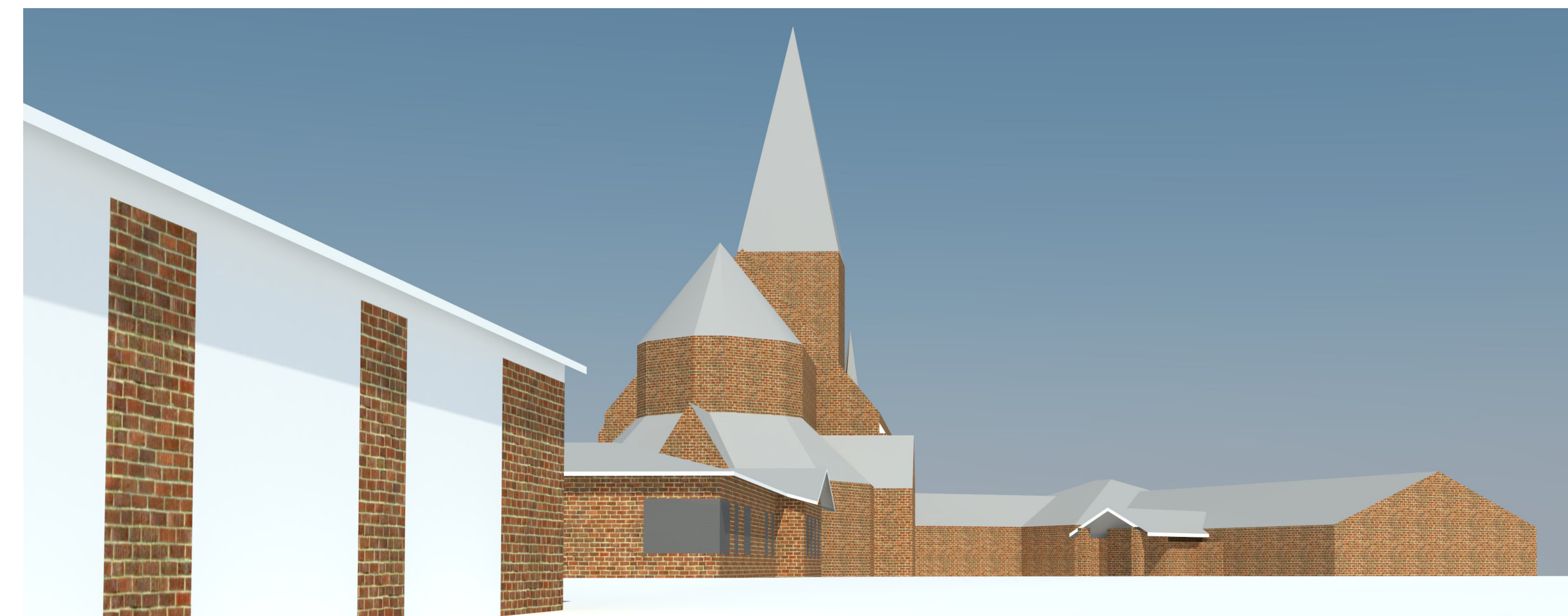
Proposed Rectory - Phase 2

June 06, 2018

St. Mary of the Assumption

ROMAN CATHOLIC CHURCH

551 15th Street East
Owen Sound, Ontario



G.M. DIEMERT ARCHITECT INC.

957 FOURTH AVENUE EAST
OWEN SOUND, ONTARIO
SUITE #201
N4K 2N9 (519)376-1975

St. Mary of the Assumption

ROMAN CATHOLIC CHURCH

551 15th Street East
Owen Sound, Ontario